

Restroom Upgrades at Concourses B, C, and D

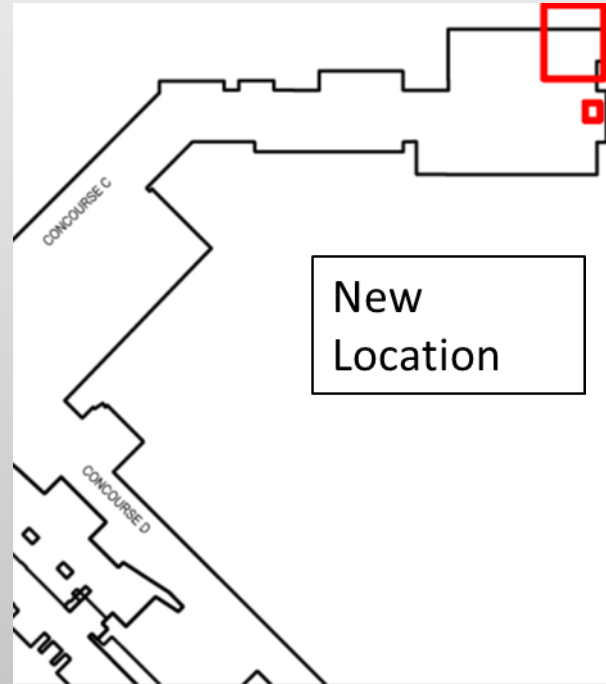
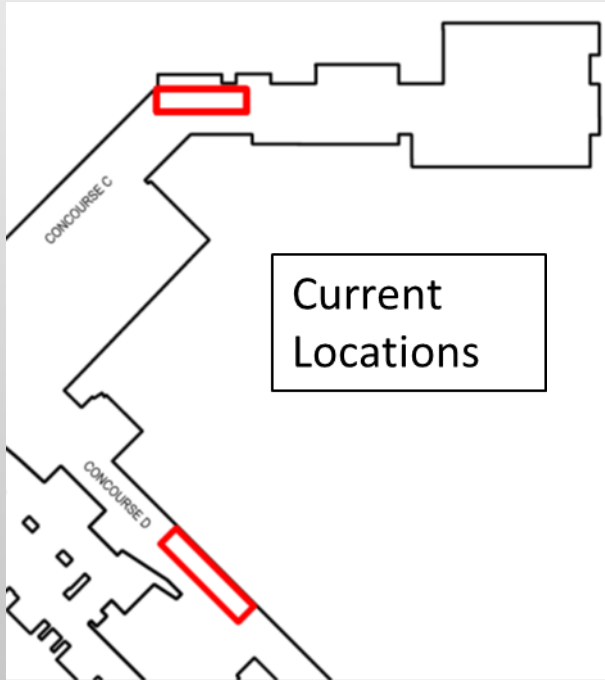
CIP #C800697

PROJECT OVERVIEW

- **Phase 1:** Enabling Work – Concourse B Leased Space Relocation
Fully authorized
Construction complete
- **Phase 2:** Enabling Work – Airline office relocation and employee restroom renovation
Requesting construction authorization
- **Phase 3:** Prototype Restroom
Requesting construction authorization
- **Phase 4:** 3 Restrooms (one per concourse)
- **Phase 5:** Remaining restrooms

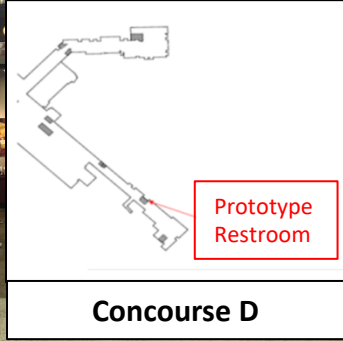
Requesting construction authorization for Phases 2 and 3

PHASE 2 – ENABLING WORK



To expand restrooms on Concourses C and D the Port must relocate existing functions from Concourse to Ramp Level

PHASE 3 – PROTOTYPE RESTROOM



Before

Prototype Restroom is located on Concourse D – it will be renovated and enlarged

PHASE 3 – PROTOTYPE RESTROOM

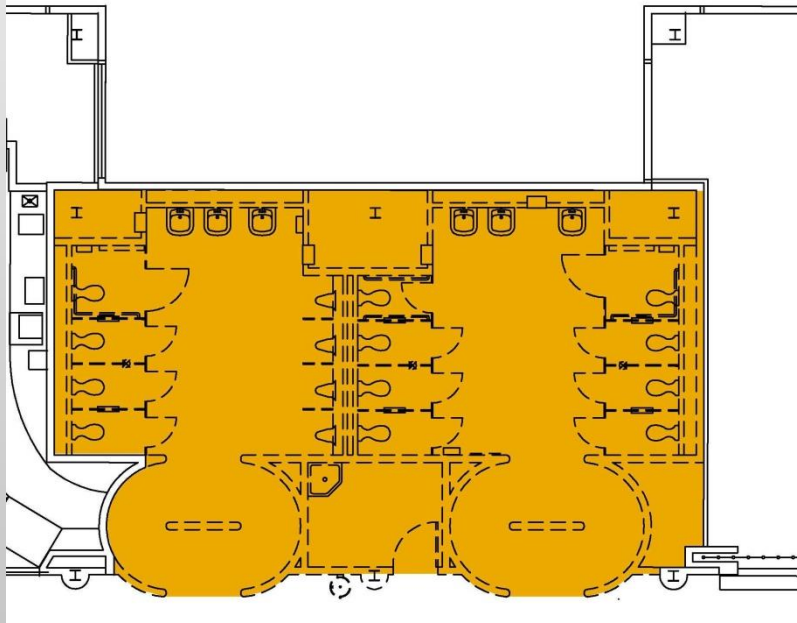


After

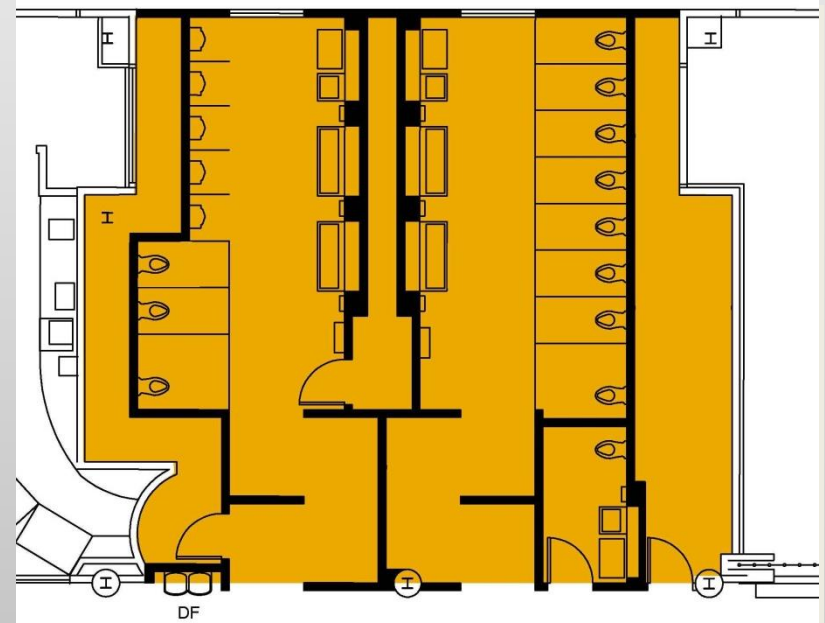
Rendering of proposed prototype restroom entrance

PHASE 3 – PROTOTYPE RESTROOM

Existing Layout

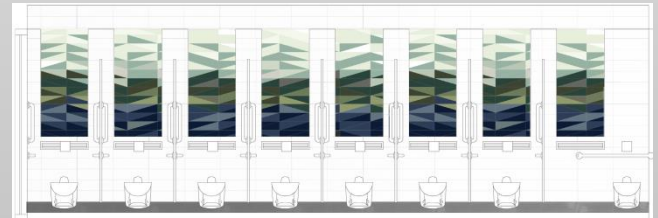
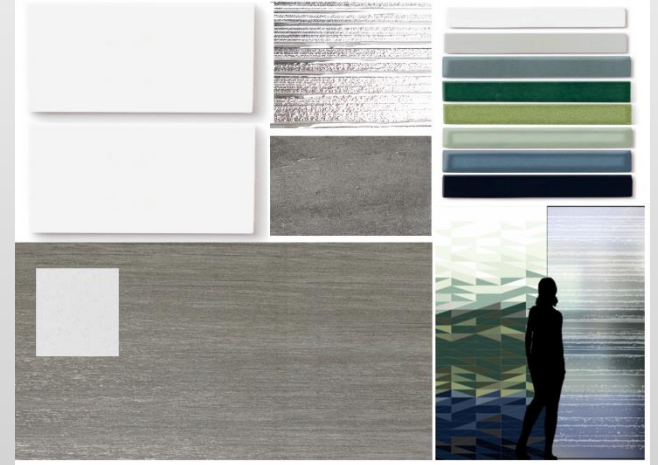


New Layout



Prototype is guiding the development of the restroom standards

PROTOTYPE RESTROOM DESIGN



Finishes convey cleanliness as well as a Pacific Northwest “Sense of Place”

PROJECT SCHEDULE

- Construction start
 - Phase 2 – 1st Quarter 2019
 - Phase 3 – 2nd Quarter 2019
- In-use dates
 - Phase 2 – 4th Quarter 2019
 - Phase 3 – 4th Quarter 2019

Prototype restroom to open Q4 2019

THANK YOU